



P. O. BOX 51
SANTA ANA, CA. 92702

**JUNE - JULY
2016**



SANTA ANA ROCK & MINERAL CLUB

BOARD OF DIRECTORS

President	Trish Voss	949-631-2314
Vice President	Jonathan Magallon	714-887-9513
Secretary	Leah Harden-O'Brien	714-963-3708
Treasurer	Charlotte Spalding	714 531-4058
Parliamentarian	Jim DeMarco	714-963-3708

COMMITTEE CHAIRMEN

Federation	Jim DeMarco	714-963-3708
Field Trip	Mike Anglin	949-348-0808
Hospitality	Claudia Sanchez	714 980-0567
Membership	Pam Greene	949 548-0752
Program	Jonathan Magallon	714-887-9513
Property/shop	Don Greene	949 548-0752
Editor	Pam Greene	949 548-0752

Email: Pam1.greene@gmail.com

SARM EMAIL: sarmclub@gmail.com
 WEB SITE: <http://www.sarmclub.org>
 WEB MASTER: pam1.greene@gmail.com

WORK SHOP: At the Greene's (members only)
 first full weekend of the month
 9 am to noon
 call Pam Greene at 949 548-0752
 to request flexible times

Santa Ana Rock & Mineral

P.O. Box 51
 Santa Ana, CA 92702

CLUB PURPOSE

The purpose of the Club is to offer an opportunity for those who are interested in rocks, minerals and fossils, to gather at regular meetings, display and examine items of interest in the hobby, to promote and also encourage the art and practice of lapidary, to exchange experiences and ideas, to organize field trips for members and guests, and to promote the general interest in and knowledge of the hobby.

MEETING: Visitors are welcome!
 7:00 PM, 3rd Wednesday of the month
 except July & December.

WHERE: 10739 Los Jardines West
 Fountain Valley, Ca 92708

SARM is a member of CFMS
 (California Federation of Mineralogical
 Societies)

For more information on shows and events
 check out their web site at
<http://www.cfmsinc.org>



CLUB PUBLICATIONS: All items may be quoted unless otherwise noted, we only ask that credit be given and we'll do the same.

CLUB CALENDAR -JUNE-JULY, 2016

JUNE 4 & 5	*** SATURDAY & SUNDAY *** WORKSHOP 9:00 AM NOON
JUNE 15	WEDNESDAY 7 PM GENERAL MEETING WILRE WRAPPING DEMONSTRATION & HANDS ON WORKSHOP
JULY	NO MEETING IN JULY NO SCHEDULED WORKSHOPS IN JULY Call for flexible times
AUG. 6 & 7	*** SATURDAY & SUNDAY *** WORKSHOP 9:00 AM NOON

FLEXIBLE WORKSHOP

If you want to use the workshop at times other than the scheduled days, call Pam or Don at (949) 548-0752 to see if we're going to be home. We're pretty flexible. Short notice is fine. If we'll be home you can use it.

I don't think inside the box. I don't think outside the box.
I didn't know there was a box.

UCLA Meteorite Gallery Lecture Series

Sunday, June 19, 2016 from 2:30 - 3:00 pm

Title: "Oriented Meteorites: Sculpture by Fire"

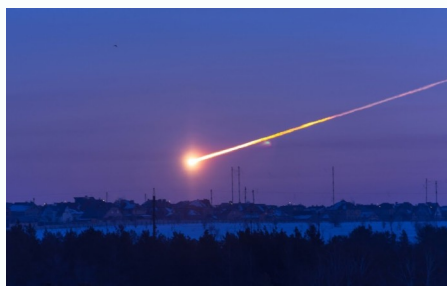
Lecture by Nick Gessler, Professor at Duke University

The fiery passage of rocks from space through the atmosphere melts, erodes and rearranges their surfaces resulting in both regular and chaotic patterns of great beauty. Nick Gessler will discuss the physics and aesthetics of these phenomena with respect to the newest addition to the UCLA Meteorite Gallery: a meteorite that maintained its orientation during atmospheric passage and that was recently found near Baker, California.

Admission Free and open to the public.

Location: UCLA, Slichter Hall, Room 3853
 (near Meteorite Gallery in Geology 3697)
 595 Charles Young Drive East
 Los Angeles, CA 90095

Contact: UCLA Meteorite Collection
 (www.meteorites.ucla.edu)
 Email: meteorites@ucla.edu



SANTA ANA ROCK AND MINERAL CLUB
MINUTES OF THE GENERAL MEMBERS MEETING
HELD ON MAY 18th, 2016

Meeting called to order by Secretary, who filled in for President at 7:10pm with the Pledge of Allegiance led by VP Jonathan. 10 members in attendance.

CLUB BUSINESS:

HOSPITALITY: Officers Claudia and Jonathan provided refreshments including cookies and apples.

TREASURER'S REPORT: For April took in \$120, spent \$0, balance \$2760.82.

FEDERATION: Officer Jim reports administration setting up new monuments. BLM & members working together to resume collecting at sights and law changes. More information as it comes up to help this effort will be available in newsletter.

MINUTES: April minutes approved as printed in May newsletter.

NEW BUSINESS:

SHOW & CROW: Member Jim shared specimens including one of quartz with gold and also handmade cabochons for sale. Member Bruce shared a large turquoise beaded necklace.

NAME CHANGE: Member suggestions to new name for 'Show & Crow' were collected and it was agreed to leave the final voting until the June meeting. Suggestions so far are: Bring & Bling; Bling & Tell; Show, Shout & Sell; Look What I Can Do; and Share & Care. Think of new suggestions and tell Secretary at next meeting.

NEW: A thank you card for Jeff Swanger was made by Secretary and left out for members to sign.

Break for activity at 7:20.

ACTIVITY: Tonight's activity was a silent auction with generous donations from members. Rules were stated and new stickers were introduced to mark a few select items that had a minimum bid starting price. A concern was raised regarding rules that will be brought up at next board meeting.

Meeting adjourned at 8:20 pm.

Secretary, Leah Harden-O'Brien

GENERAL MEETING

Wednesday June, 15 2015

Our meeting this month will be a class in wire wrapping. If you have your own tools or wire bring them. We will have tools and supplies available to use for those who don't have their own. If you have a stone or bead you want to wrap bring it too.

We will discuss the various tools used in wire wrapping and demonstrate a way to make a simple pendant from a bead, cab, tumbled stone, coin, or similarly shaped item.

Refreshments will be provided by the club



SEE YOU AT THE MEETING

UPCOMING CLUB SHOWS & EVENTS

June 3 - 5: LA HABRA, CA
North Orange County Gem & Mineral Society
La Habra Community Center
101 W. La Habra Blvd.
Hours: Fri 5 - 8; Sat 10 - 6; Sun 10 - 5



June 4 - 5: GLENDORA, CA
Glendora Gems & Mineral Society
Goddard Middle School
859 E. Sierra Madre Avenue
Hours: Sat. 10 - 5; Sun 10 - 4

June 18 - 19: CAMBRIA, CA
San Luis Obispo Gem & Mineral Club
Cambria Vets Hall (new show location)
1000 Main Street
Hours: 10 - 5 daily



CULVER CITY, CA
Culver City Rock & Mineral Club
Veterans Memorial Auditorium
4117 Overland Blvd (@Culver Blvd, Near the 405 & 10 Freeways)
Hours: Sat 10 - 6; Sun 10 - 5



August 13 - 14: SAN FRANCISCO, CA
San Francisco Gem & Mineral Society
San Francisco County Fair Building
9th Avenue & Lincoln Way
Hours: Sat. 10 - 6; Sun. 10 - 5



To Dop Or Not Too Dop

Having a hard time with your dopping? A quick run down on how I do it; 1st Heat up the dop. 2nd: Clean your rock with denatured alcohol, it has no impurities. Then heat your rock up, place a little piece of dop on it, when it's good to go that dop will be melted. 3rd: while the rock is heating prep a stick with a suitable foundation for the cab. Make certain your stick is centered, this has a great effect on how well your polishing turns out. After the rock is good and heated place it on a good chunk of metal. This will increase the cooling process. Dip your stick in the melted dop quickly so you don't lose your foundation, and center it on the cab: hold until it will stay on it's own. After it is cooled you can begin to remove the excess dop, I use a pair of needle nose pliers to snap off the excess, then a utility knife to scrape off the residual.



JUNE BIRTHSTONES

June counts three gems as birthstones: pearl, Alexandrite, and moonstone.

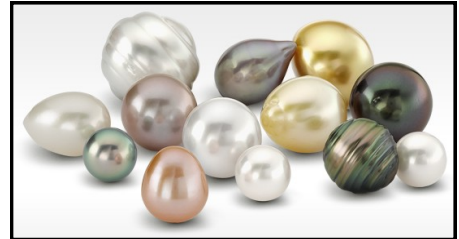
ALEXANDRITE is a gemstone with two personalities. It displays various shades of green in natural light and red under artificial lights. Ideal alexandrite shows a very distinctive change, from grass green to raspberry red. One of the rarest gemstones, large ones showing the distinct change of color are extremely hard to find and very costly. It was supposedly discovered in the Ural region of Russia when the Russian heir apparent, Alexander II came of age. The most important stones were owned by the Russian Royal Family. Because of its ability to change colors, legend holds that alexandrite bring good fortune when the sun is shining. It should be displayed prominently in a ring, pendant or brooch.

From Canaveral Moonstone, via CFMS Newsletter, 6/94



PEARL, the only gem which attains perfection in the sea, is an organic product of nature coming from the bodies of the pearl oysters and pearl mussels. The first jewel mentioned in the earliest deciphered Ancient Egyptian writing is a pearl. Pearls are also frequently mentioned in the Bible, Talmud and Koran. A legend of Arabia called them the "tears of the Gods" because they were believed to be formed of raindrops falling into open oyster shells. In India, there is a legend that Buddha sends down dewdrops and the oysters catch and hold them until they turn into pearls. The Oriental Pearl is known as the "gem of the moon" and is believed to confer the great gift of vitality to the wearer.

Diablo Diggins, via Rocky Review 6/93



MOONSTONE Silvery or pale bluish reflections of considerable intensity are often noted in albite, thus providing "moonstone". When these reflections display a variety of hues, the term "peristerite" is sometimes used. Moonstone is a variety of albite, which is one of the species in the plagioclase series of feldspars.

Feldspar is one of the important rock-forming minerals and is the standard for 6 on Moh's scale of hardness.

Moonstone is sodium-calcium aluminum silicate. It is usually white or colorless and transparent to translucent with the vitreous to pearly luster. It forms in the triclinic crystal system and polysynthetic twinning is very common. Cleavage is usually prominent on fractured specimens.

Moonstones are cut cabochon. They occur at St. Gothard, Switzerland, and in Elba, Burma, and Sri Lanka. Albite is found primarily in granitic pegmatites as bladed masses sometimes of delicate bluish or greenish hues, or as bladed crystals coating walls of cavities. "Peristerite" occurs in Ontario, Canada, and has been used for a limited extent for gemstones.

from Sooner Rockologist via Rocky Review 6/93



June 2 Leah Harden-O'Brien
 June 12 Richard Conlan
 June 16 Paul Berg
 June 17 Bill O'Dell
 June 22 June Huntley
 June 23 Julia Davidson

Letters between son and dad

Dear Dad,
 School i\$ really great. I am making lot\$ of friend\$ and \$tudying very hard. With all my \$tuff, I \$imply can't think of anything I need, \$o if you would like, you can ju\$t \$end me a card, a\$ I would love to hear from you.
 Love,
 Your \$on

The Reply:

Dear Son,
 I kNOW that astroNomy, ecoNomics, and oceaNOgraphy are eNOugh to keep even a hoNOur student busy. Do NOt forget that the pursuit of kNOWLEDge is a NOble task, and you can never study eNOugh.
 Dad



JULY'S BIRTHSTONE - RUBY

For thousands of years, the ruby has been considered one of the most valuable gemstones on Earth. It has everything a precious stone should have: magnificent color, excellent hardness and outstanding brilliance. In addition to that, it is an extremely rare gemstone, especially in its finer qualities.

Ruby is the red variety of the mineral corundum, one of the hardest minerals on Earth, of which the sapphire is also a variety. Pure corundum is colorless. These gemstones have excellent hardness. On the Mohs scale their score of 9 is second only to that of the diamond. Ruby, this magnificent red variety from the multi-colored corundum family, consists of aluminium oxide and chrome as well as very fine traces of other elements. Only red corundum is entitled to be called ruby, all other colors being classified as sapphires.

For a long time India was regarded as the ruby's classical country of origin. In the major works of Indian literature, a rich store of knowledge about gemstones has been handed down over a period of more than two thousand years. The term 'corundum', which we use today, is derived from the Sanskrit word 'kuruvinda'. The Sanskrit word for ruby is 'ratnaraj', which means something like 'king of the gemstones'. Whenever a particularly beautiful ruby crystal was found, the ruler sent high dignitaries out to meet the precious gemstone and welcome it in appropriate style. Today, rubies still decorate the insignia of many royal households. But are they really all genuine rubies? The close relationship between the ruby and the sapphire has only been known since the beginning of the 19th century. Up to that time, red garnets or spinels were also thought to be rubies. (That, indeed, is why the 'Black Ruby' and the 'Timur Ruby', two of the British Crown Jewels, were so named, when they are not actually rubies at all, but spinels.)



Some rubies display a wonderful silky shine, the so-called 'silk' of the ruby. This phenomenon is caused by very fine needles of rutile. And now and then one of the rare star rubies is found. Here too, the mineral rutile is involved: having formed a star-shaped deposit within the ruby, it causes a captivating light effect known by the experts as asterism. If rubies of this kind are cut as half-dome shaped cabochons, the result is a six-spoked star which seems to glide magically across the surface of the stone when the latter is moved. Star rubies are precious rarities. Their value depends on the beauty and attractiveness of the color and, though only to a lesser extent, on their transparency. Fine star rubies, however, should always display rays which are fully formed all the way to the imaginary horizontal line which runs through the middle of the stone, and the star itself should be situated right in the centre.

Which is the most beautiful ruby-red? If the gemstone experts refer to a 'Burmese ruby', they are talking about the top luxury category. However, it does not necessarily follow that the stone is of Burmese origin. It is basically an indication of the fact that the color of the ruby in question is that typically shown by stones from the famous deposits in Burma (now Myanmar): a rich, full red with a slightly bluish hue. The color is sometimes referred to as 'pigeon-blood-red', but the term 'Burmese color' is a more fitting description. A connoisseur will immediately associate this color with the legendary 'Mogok Stone Tract' and the gemstone centre of Mogok in the North of Myanmar. Unfortunately, really fine qualities are quite rare even here. The color of a Burmese ruby is regarded as exceptionally vivid. It is said to display its unique brilliance in any light, be it natural or artificial.



Mong Hsu in the North-East of Myanmar, is where the most important ruby deposits of the nineties lie. Originally, it was believed that these rubies would hardly prove suitable for use in jewellery, since untreated Mong Hsu ruby crystals actually display two colors: a purple to black core and a bright red periphery. Only when it was discovered that the dark core could be turned into deep red by heat treatment did rubies from Mong Hsu begin to find their way on to the jewellery market. Today, the Mong Hsu gemstone mines are still among the most important ruby suppliers. In the main, they offer heat-treated rubies in commercial qualities and sizes between 0.5 and 3 carats.

Ruby deposits also exist in neighbouring Vietnam, near the Chinese border. Rubies of Vietnamese origin generally display a slightly purplish hue. Rubies from Thailand, another classical supplier, however, often have a darker red which tends towards brown. This 'Siamese color' - an elegantly muted deep red - is considered second in beauty only to the Burmese color, and is especially popular in the USA. Ceylon rubies, which have now become very rare, are mainly light red, like ripe raspberries.

Other ruby deposits are located in Northern Pakistan in the Hunza Valley, Kashmir, Tadjikistan, Laos, Nepal, and Afghanistan. But rubies are also produced in India, where deposits with relatively large crystals were discovered in the federal states of Mysore and Orissa. These crystals have many inclusions, but they are, nevertheless, eminently suited to being cut as beads or cabochons.

Lately, people have begun to talk about East Africa as a source of rubies. Straight after their discovery in the 1960s, rubies from Kenya and Tanzania surprised the experts by their beautiful, strong color, which may vary from light to dark red. But in the African mines too, fine and clear rubies of good color, purity and size are very rare. Usually the qualities mined are of a merely average quality.

HAPPY BIRTHDAY



July	10	Don Greene
July	11	Michael Anglin
July	14	Craig Curry
July	15	Martha Jensen
July	18	Darrel Rodgers

THE ROCKHOUND SOAP BOX
"California and the New National Monuments"
CFMS Public Lands Advisory Committee John Martin
Committee Chair plac@antelecom.net

It seems that the hot topic going around right now is what is happening in the Southern California Deserts in regards to collecting of rocks, minerals and fossils on public lands. So, just a brief history of what has happened. In 1994 Senator Diane Feinstein introduced Senate Bill S.21: California Desert Protection Act of 1994. After much debate it was passed and signed into law by the President. The bill created 71 Wilderness Areas in the California Desert Conservation Area and withdrew 105,197,277 acres (100,273.26 Sq. Miles) of public lands from most forms of public access. In most of the 71 wilderness areas Rock and Mineral collecting was allowed, only if you could reach the collecting sites by foot or horse-back and use only non-powered Hand Tools.

Over the next 22 years Senator Feinstein and others introduced additional bills to congress to withdraw more of California lands from public access. Most of the bills met resistance in congress and died in committee. They never made it to the house or senate floor for debate. Note: Bills introduced during a session of congress if not passed during that session die in committee at the end of that session. Some were re-introduced at the start of the next session and the cycle started over. Basically wilderness legislation stopped but the environmental and conservation lobby pick up where legislation failed and more collecting areas were closed due to legislation and litigation of wildlife and wildlife habitat protection through the Endangered Species Act.

Over the past 20 years the Recreational Rockhound has lost over 75% of the pre 1994 collecting areas of Southern California through legislation, conservation and wildlife habitat regulations and restrictions. Out of the remaining 25% of the open public lands in the deserts of California the creation of the 4 new National Monuments in Southern California, San Gabriel National Monument, Mojave Trails National Monument, Sand to Snow National Monument and the Castle Mountain National Monument another 1.8 Million acres are now restricted to what human activities are acceptable. Prior to the creation of the national monuments in California there were several bills going through congress that were trending to be favorable to the recreationist and environmentalist alike and would have probably past congress and became law. At which time Recreational Rockhounding would have been allowed by legislation and the American Recreational Rockhound would have had a chair in each of the monument's management teams. That did not happen and the monuments were created by Presidential Proclamation which has, at this time, made it unlawful to remove any rocks, minerals or fossils from within the boundaries of the established national monuments. (Read the Proclamations not the hype on the internet) In each of the proclamations it states that within 3 years from the date of the signing of the proclamation the Monument Management Agency (BLM, USFS, NPS) will submit to the Secretary of the Interior and to congress a National Monument Management

Plan. This plan is where the Recreational Rockhound will have the authority to collect rocks and minerals for non-commercial, personal and educational use.

The management plan has started within the BLM. Three BLM district Managers have been tasked with creating the plan and at the appropriate time in the process, the plan will be released for public input and comment. This is the time period in which we, the Recreational Rockhound, must make our inputs and comments known to the Land Managers that are making the decisions to allow collecting of rocks and minerals. If Recreational Rockhounding is not listed in the management plan collecting will not be allowed. This work has already started with the gathering of collecting site information, attending BLM Public meetings, joining advisory groups, contacting BLM offices and discussing the issues, contacting elected official's offices and voicing our personal concerns. Through personal experience, when I have attended public meetings, the recreational Rockhound is usually out numbered at least 4 to 1 by the groups which do not want recreational rockhounding recognized as a recreational activity. I am only one voice and to make Recreational Rockhounding a recognized activity it will take a lot more voices, yes the voices of the 8,747 members of the CFMS, supporting this recreational activity.

In closing I just want to state that I know that people are still going to collect in areas like Lavic Siding, Afton Canyon the Cady Mountains and others that now lie inside the national monuments. Please keep in mind that it is unlawful to remove rocks and minerals from the monument. I also have talked to the BLM office and managers responsible for the monuments and they have stated verbally that recreational activities that were allowed before the creation of the monuments are going to be allowed to continue for the time being or until they receive new instructions. They have also stated verbally they do not have the resources to patrol the monuments looking for violations. They have also stated verbally they probably and most likely will not go looking at the known collecting sites and issue citations or confiscate your equipment or vehicles. Just keep in mind if you do venture to the new national monuments in southern California with the intention of collecting the jaspers, agates and minerals found throughout the monuments, you are breaking federal law as it stands today. That is the reason that Recreational Rockhounding must be included in the monument management plans. Hopefully more information will be available by the time of the CFMS Convention in Placerville, CA. this coming September. As always, if you have any questions or concerns, do not hesitate to contact me and I will strive to answer and resolve them.
 plac@antelecom.net

"Happy Rockhounding and Enjoy Your Public Lands"

MARK TWAIN QUOTES

Patriotism is supporting your country all the time, and your government when it deserves it.
 Do the right thing. It will gratify some people and astonish the rest.

The Secret of getting ahead is getting started.
 It is better to keep your mouth closed and let people think you are a fool than to open it and remove all doubt.